

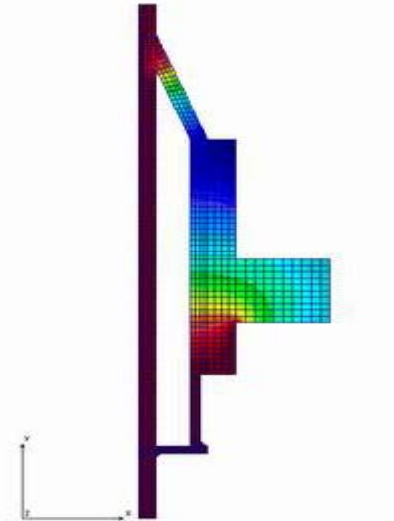
## MECHANICAL DESIGN of PROCESS PLANT EQUIPMENT

This four-day course will provide an intensive overview of relevant industry standards and practices for the mechanical design maintenance of pressure vessels, heat exchangers, piping systems, and aboveground atmospheric storage tanks.

### Course Highlights

The material presented demonstrates some concepts that are not always shown or described in textbooks. The course emphasis is on developing a practical understanding of the mechanical design of fixed equipment and piping systems in process plant applications. Sample problems and participant exercises are included throughout the course to illustrate the concepts discussed and provide the attendees with practice in applying them.

**Cost** is \$2,340 + GST applies Payment by Visa, cheque or purchase order.



-----  
**- REGISTRATION FORM -**  
**MECHANICAL DESIGN of PROCESS PLANT EQUIPMENT**  
DATE: TBA      LOCATION: TBA

**ORGANIZATION:** \_\_\_\_\_

**ADDRESS:** \_\_\_\_\_

**NAME OF CONTACT or ATTENDEE:** \_\_\_\_\_

**E:** \_\_\_\_\_ **T:** \_\_\_\_\_

**CHEQUE #** \_\_\_\_\_ **VISA** \_\_\_\_\_ Expires \_\_\_\_\_

**PO #:** \_\_\_\_\_ [due upon registration]      Mo / Year

**OTHER ATTENDEE NAMES & E-mail addresses: (add space, as required)**

-----  
For more information, see [www.engineer.ca](http://www.engineer.ca) or contact: John Aumuller at T: 780 484 5021 or  
E: [aumullerj@engineer.ca](mailto:aumullerj@engineer.ca). Email this form or the information to the given e-address.

Cheque or PO made to: Engineering Design & Analysis Ltd. or EDA Ltd. GST # - 885 320 879